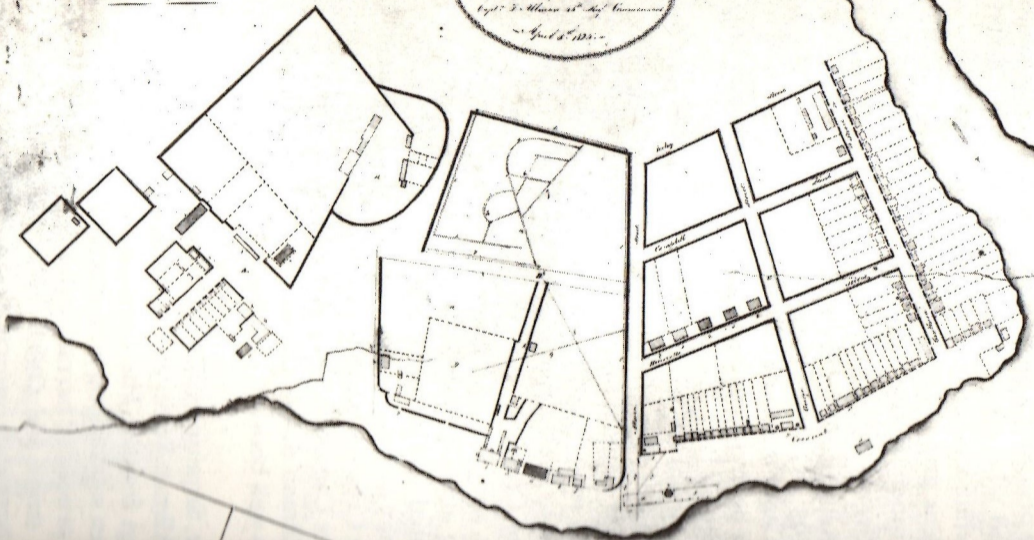


*James Meehan's plan of Port Macquarie for Governor Macquarie's final approval [1821]*

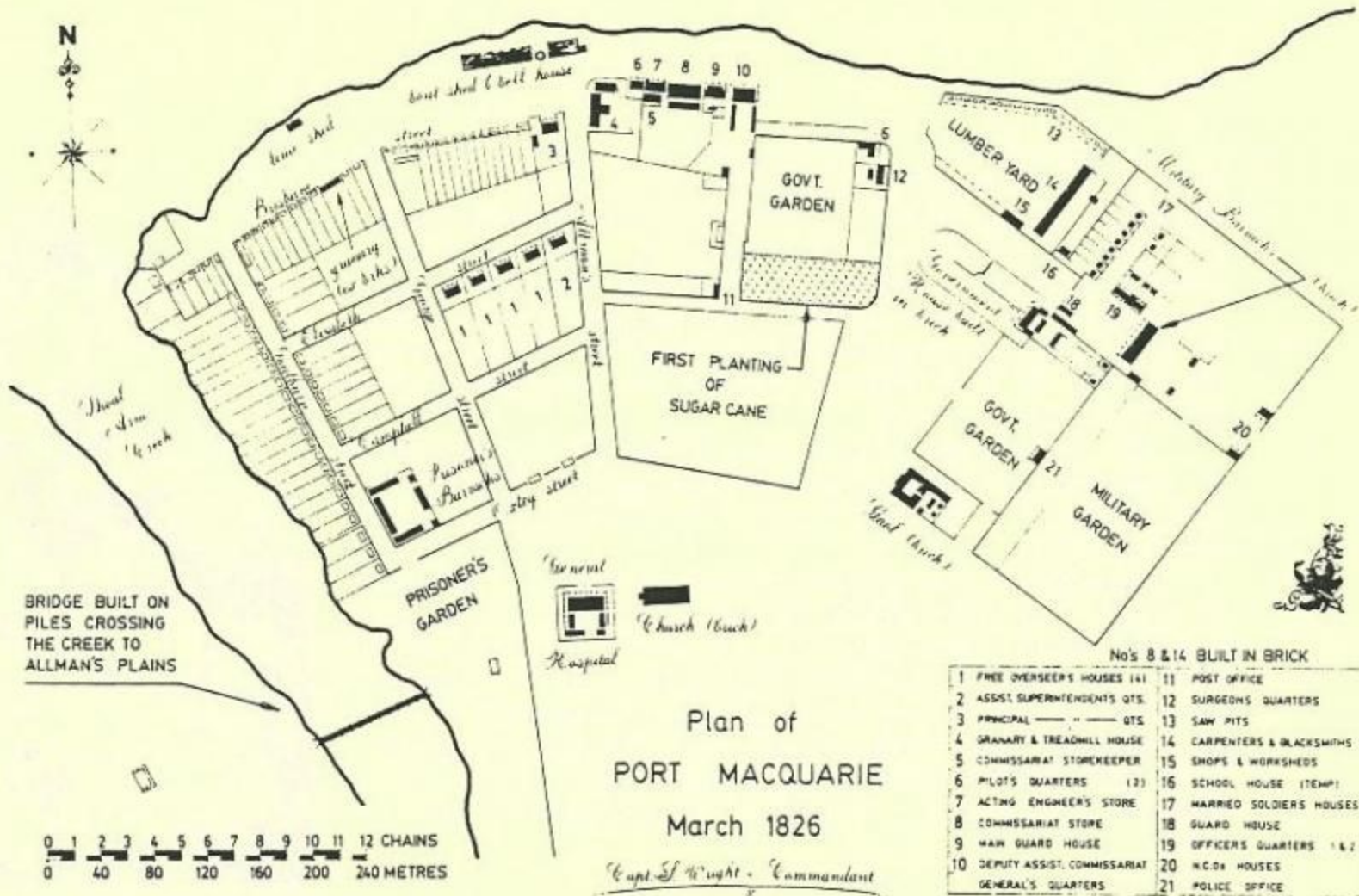
Ground plan of Port Macquarie  
to be kept with

Ground Plan  
of  
PORT MACQUARIE.  
Capt. F. M. Barré, R.N. Commr.  
April 6. 1810.

Scale  
Two Chains to an Inch.



Ground plan of Port Macquarie by Captain Francis Barré

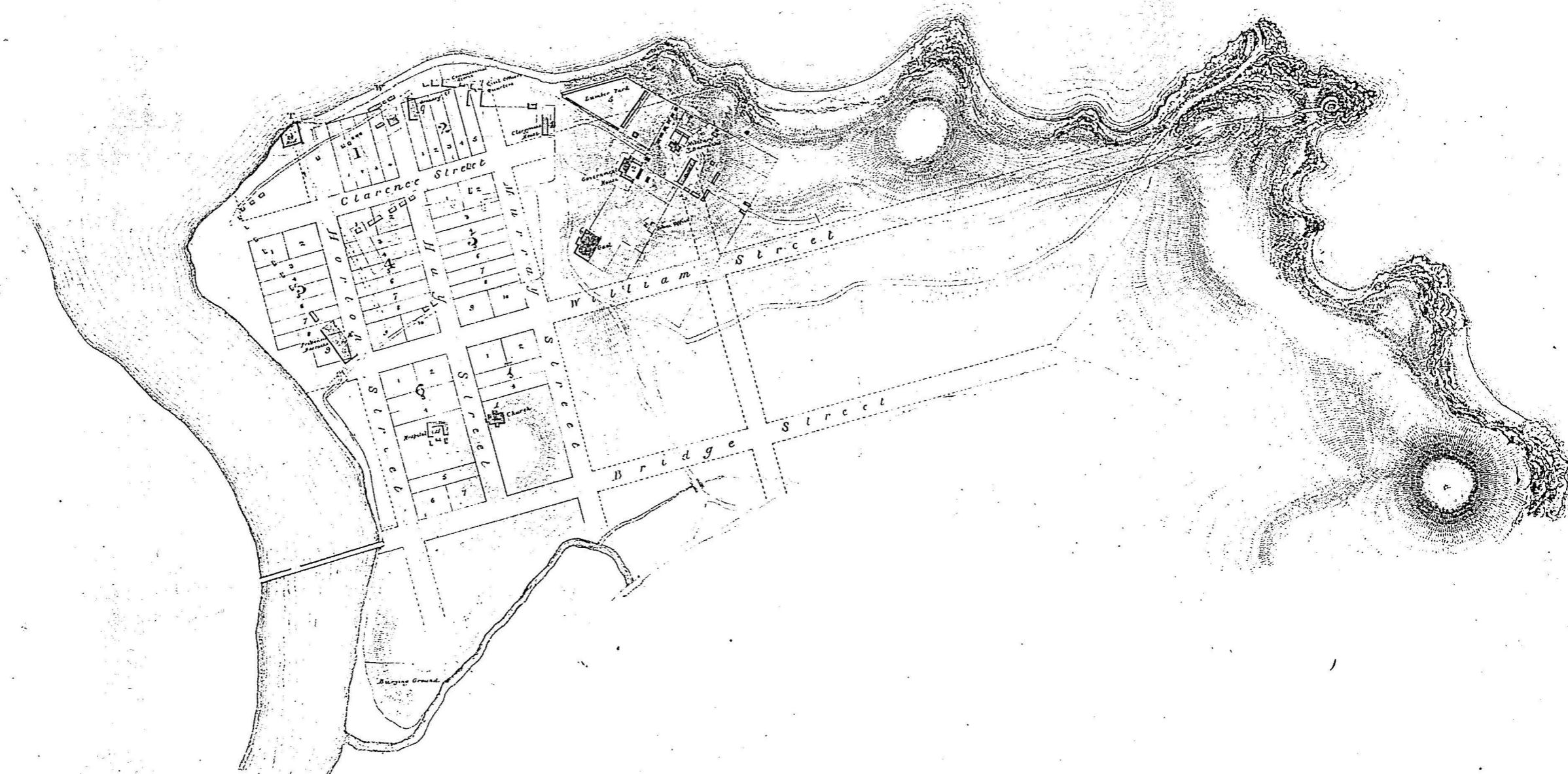


No's 8 & 14 BUILT IN BRICK

1 FREE OVERSEER'S HOUSES (4)	11 POST OFFICE
2 ASSIST. SUPERINTENDENT'S QTS.	12 SURGEON'S QUARTERS
3 PRINCIPAL " " QTS.	13 SAW PITS
4 GRANARY & TREADMILL HOUSE	14 CARPENTERS & BLACKSMITHS
5 COMMISSARIAT STOREKEEPER	15 SHOPS & WORKSHOPS
6 PILOT'S QUARTERS (2)	16 SCHOOL HOUSE (TEMP)
7 ACTING ENGINEER'S STORE	17 MARRIED SOLDIERS HOUSES
8 COMMISSARIAT STORE	18 GUARD HOUSE
9 HAWK GUARD HOUSE	19 OFFICERS' QUARTERS 1 & 2
10 DEPUTY ASSIST. COMMISSARIAT	20 N.C.O.'S HOUSES
GENERAL'S QUARTERS	21 POLICE OFFICE

PLAN OF  
PORT MACQUARIE

Shewing a new  
arrangement of Streets  
according to the regulations  
April, 1831

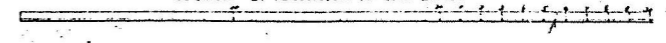


REFERENCE

- 1 Church
- 2 Government House
- 3 Military Barracks
- 4 Clergymans House
- 5 Lynders-yard
- 6 Coal
- 7 Civil Officers Quarters
- 8 Commiss<sup>rs</sup> Stores
- 9 Granary
- 10 Prisoners Barracks
- 11 Hospital
- 12 Signal Station

*prolongation of the  
approach, making the Eastern side of  
the Tide Mill, the Western Boundary  
of Kington Street. Reddell  
19 July 1831.*

Scale 5 Chains to an Inch



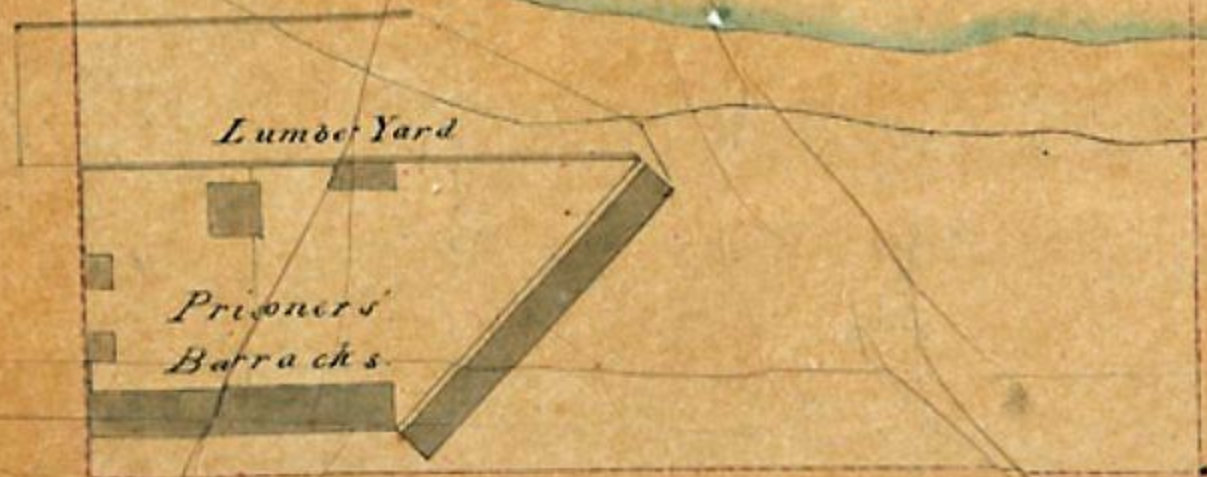
18  
of the Lt. Col. - 19th Oct  
J. C. M. - Jan 7

# PORT MACQUARIE

Sketch of Ground proposed to be retained for Military Defences and for Barrack purposes

To accompany Commanding Royal Engineers Report dated 29<sup>th</sup> October 1847

N.B. The boundary of the Ground proposed to be retained is shown by dotted Red Line



CLARENCE ST



WILLIAM ST

MUNSTER ST

GRANT ST



0 1 2 3 4 5 6 7 Chains

Scale 1 Chain to the Inch

Signed  
J. Gordon  
Lieut Colonel  
29<sup>th</sup> Oct 1847  
J. R. Lubbock  
27<sup>th</sup> Feb 1848